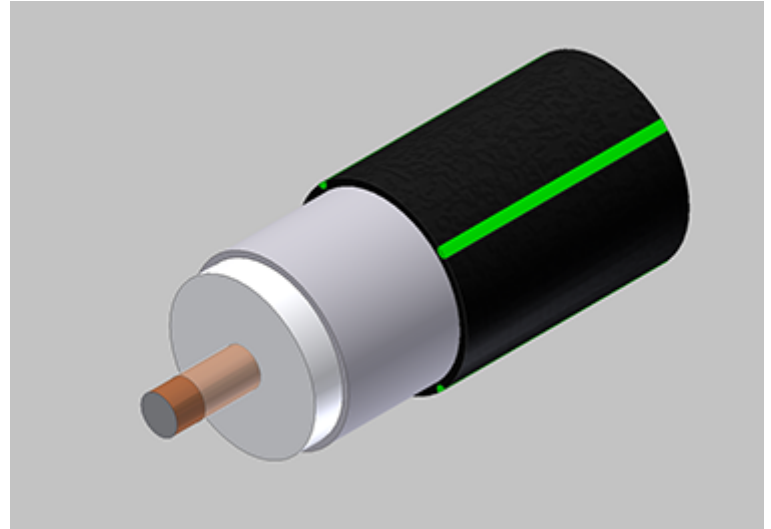




625 Series Coaxial Cable  
Copper Clad Aluminum Conductor  
Foamed Polyethylene Dielectric  
Seamless Aluminum Tube Outer Conductor  
Medium Density Polyethylene Jacket w/  
RodentRepel® Animal Aversive Additive\*  
Green Tracer Stripes (2X)



**Cable Ordering Information**

Part Number	Description	NEC / CE Listing
750625JT00BK16300001	T10625JVI / GNGN (AA)	

**Characteristics**

Material	Detail	inches	mm
Inner Conductor	Copper Clad Aluminum	0.136	3.45
Dielectric	Foamed Polyethylene	0.563	14.3
Outer Conductor	Seamless Aluminum Tube	0.625	15.9
Floodant	---	---	---
Jacket	Polyethylene, Outdoor, Black*	0.685	17.4
Messenger	---	---	---
Cable Width	---	---	---
	---	---	---
	---	---	---

**Mechanical Specifications**

Minimum Bend Radius, in. (mm)		4.5	( 114)
Product Weight	(less reel)	145	( 216)

Customers are reminded that they are SOLELY responsible for confirming that all products are properly installed and used in accordance with all applicable codes and regulations.

Document: t10625jvi-gngn (aa)\_3.0ghz19.docx  
Revision: 2019-09-04  
Page: 1 of 2

Amphenol Broadband Solutions.  
358 Hall Avenue  
Wallingford, CT 06492  
Toll Free +1-800-677-2288  
Toll +1-434-432-1800  
Fax +1-434-432-1821  
www.timesfiber.com

**uncontrolled copy**

All Rights Reserved,  
Specifications subject to change without notice

**Electrical Specifications**

Impedance, $\Omega$	75 $\pm$ 2	
Velocity of Propagation, %	87	
Capacitance, Nominal	15.3 pF/ft	50.2 pF/m
DC Resistance	$\Omega$ / kft	$\Omega$ / km
Inner Conductor	0.86	2.82
Outer Conductor	0.23	0.75
Loop	1.09	3.57

**Attenuation, Maximum @ 68 °F (20 °C)**

Frequency, MHz	dB / 100 ft	dB / 100 m
5	0.13	0.43
55	0.45	1.48
85	0.56	1.84
211	0.89	2.92
250	0.98	3.22
270	1.02	3.35
300	1.08	3.54
330	1.14	3.74
350	1.18	3.87
400	1.27	4.17
450	1.35	4.43
500	1.43	4.69
550	1.51	4.95
600	1.58	5.18
750	1.78	5.84
870	1.95	6.40
1002	2.07	6.79
1100	2.19	7.19
1200	2.30	7.55
1218	2.32	7.61
1300	2.40	7.87
1400	2.50	8.20
1625	2.61	8.56
1600	2.70	8.86
1700	2.80	9.19
1794	2.89	9.48
1800	2.90	9.51
2000	3.07	10.07
2200	3.25	10.66
2400	3.41	11.19
2600	3.58	11.75
2800	3.74	12.27
3000	3.89	12.76

**Structural Return Loss**

MHz		dB
	5-1002	-30

Customers are reminded that they are SOLELY responsible for confirming that all products are properly installed and used in accordance with all applicable codes and regulations.

Document: t10625jvi-gngn (aa)\_3.0ghz19.docx  
Revision: 2019-09-04  
Page: 2 of 2

**uncontrolled copy**

All Rights Reserved,  
Specifications subject to change without notice

**Amphenol Broadband Solutions.**  
358 Hall Avenue  
Wallingford, CT 06492  
Toll Free +1-800-677-2288  
Toll +1-434-432-1800  
Fax +1-434-432-1821  
www.timesfiber.com