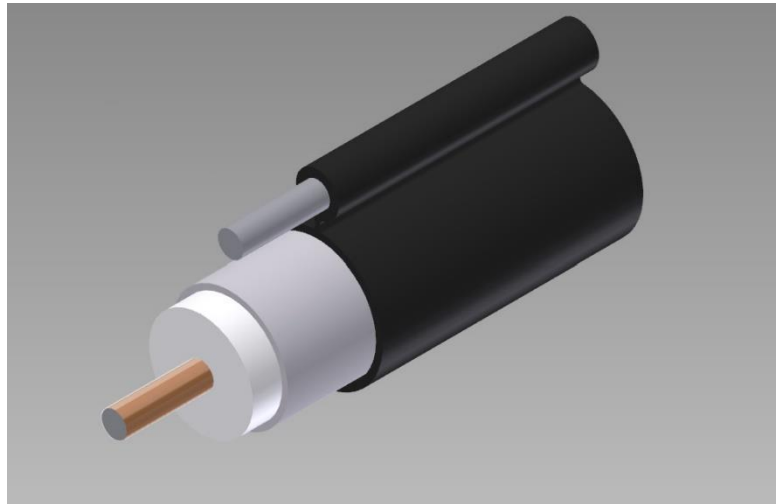


625 Series Coaxial Cable
Copper Clad Aluminum Conductor
Foamed Polyethylene Dielectric
Seamless Aluminum Tube Outer Conductor
Medium Density Polyethylene Jacket
0.188" Galvanized Steel Messenger,
Stranded



Cable Ordering Information

Part Number	Description	NEC / CSA Listing
750625MS00BK11000001	T10625MS / 110 MESS	n/a

Characteristics

Material	Detail	inches	mm
Inner Conductor	Copper Clad Aluminum	0.136	3.45
Dielectric	Foamed Polyethylene	0.563	14.3
Outer Conductor	Seamless Aluminum Tube	0.625	15.9
Floodant	---	---	---
Jacket	Polyethylene, Outdoor Black	0.695	17.7
Messenger	Galvanized Steel, Solid	0.188	4.78
Cable Width	---	1.100	27.9

Mechanical Specifications

Minimum Bend Radius, in. (mm)		5.0	(127)
Product Weight, lbs/kft (kg/km)	(less reel)	235	(350)

Customers are reminded that they are SOLELY responsible for confirming that all products are properly installed and used in accordance with all applicable codes and regulations.

Document: t10625ms-188 mess_1.8ghz19.docx
Revision: 02.04.2019
Page: 1 of 2

Amphenol Broadband Solutions
358 Hall Avenue
Wallingford, CT 06492
Toll Free +1-800-677-2288
Toll +1-434-432-1800
Fax +1-434-432-1821
www.timesfiber.com

uncontrolled copy

All Rights Reserved,
Specifications subject to change without notice

Electrical Specifications		
Impedance, Ω	75 \pm 2	
Velocity of Propagation, %	87	
Capacitance, Nominal	15.3 pF/ft	50.2 pF/m
DC Resistance	Ω / kft	Ω / km
Inner Conductor	0.86	2.82
Outer Conductor	0.23	0.75
Loop	1.09	3.57
Structural Return Loss, minimum	dB	
5~1002 MHz	30	

Attenuation, Maximum @ 68 °F (20 °C)		
Frequency, MHz	dB / 100 ft	dB / 100 m
5	0.13	0.43
55	0.45	1.46
211	0.89	2.92
250	0.98	3.22
270	1.02	3.35
300	1.08	3.54
330	1.14	3.75
350	1.18	3.87
400	1.27	4.17
450	1.35	4.43
500	1.43	4.69
550	1.51	4.95
600	1.58	5.18
750	1.78	5.84
870	1.95	6.40
1002	2.07	6.79
1100	2.19	7.18
1200	2.30	7.55
1218	2.32	7.61
1300	2.40	7.87
1400	2.50	8.20
1500	2.61	8.56
1600	2.70	8.86
1700	2.80	9.19
1794	2.89	9.48
1800	2.90	9.51

Customers are reminded that they are SOLELY responsible for confirming that all products are properly installed and used in accordance with all applicable codes and regulations.

Document: t10625ms-188 mess_1.8ghz19.docx
Revision: 02.04.2019
Page: 2 of 2

Amphenol Broadband Solutions
358 Hall Avenue
Wallingford, CT 06492
Toll Free +1-800-677-2288
Toll +1-434-432-1800
Fax +1-434-432-1821
www.timesfiber.com

uncontrolled copy

All Rights Reserved,
Specifications subject to change without notice