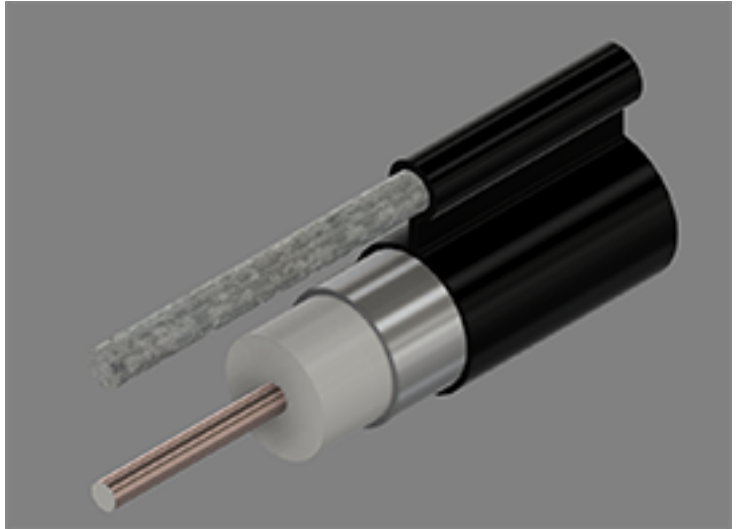


565 Series Coaxial Cable  
 Copper Clad Aluminum Conductor  
 Foamed Polyethylene Dielectric  
 Seamless Aluminum Tube Outer Conductor  
 Medium Density Polyethylene Jacket  
 0.109" Galvanized Steel Messenger



**Cable Ordering Information**

Part Number	Description	NEC / CE Listing
750565MS00BK07000001	TX10565MS / 109 MESS	

**Characteristics**

Material	Detail	inches	mm
Inner Conductor	Copper Clad Aluminum	0.129	3.28
Dielectric	Foamed Polyethylene	0.519	13.2
Outer Conductor	Seamless Aluminum Tube	0.565	14.4
Floodant	---	---	---
Jacket	Polyethylene, Outdoor, Black	0.625	15.9
Messenger	Galvanized Steel	0.109	2.77
Cable Width	---	1.010	25.7
	---	---	---
	---	---	---

**Mechanical Specifications**

Minimum Bend Radius, in. (mm)		5.1	( 130)
Product Weight	(less reel)	152	( 226)

Customers are reminded that they are SOLELY responsible for confirming that all products are properly installed and used in accordance with all applicable codes and regulations.

Document: tx10565ms 109\_3.0ghz19.docx  
 Revision: 2019-09-09  
 Page: 1 of 2

Amphenol Broadband Solutions.  
 358 Hall Avenue  
 Wallingford, CT 06492  
 Toll Free +1-800-677-2288  
 Toll +1-434-432-1800  
 Fax +1-434-432-1821  
 www.timesfiber.com

**uncontrolled copy**

All Rights Reserved,  
 Specifications subject to change without notice

**Electrical Specifications**

Impedance, $\Omega$	75 $\pm$ 2	
Velocity of Propagation, %	89	
Capacitance, Nominal	15.2 pF/ft	49.9 pF/m
DC Resistance	$\Omega$ / kft	$\Omega$ / km
Inner Conductor	0.96	3.15
Outer Conductor	0.34	1.12
Loop	1.30	4.27

**Attenuation, Maximum @ 68 °F (20 °C)**

Frequency, MHz	dB / 100 ft	dB / 100 m
5	0.14	0.46
55	0.47	1.54
85	0.59	1.94
211	0.93	3.05
250	1.03	3.38
270	1.07	3.51
300	1.13	3.71
330	1.19	3.90
350	1.23	4.04
400	1.32	4.33
450	1.40	4.59
500	1.49	4.89
550	1.56	5.12
600	1.64	5.38
750	1.85	6.07
870	2.01	6.59
1002	2.17	7.12
1100	2.29	7.51
1200	2.40	7.87
1218	2.41	7.91
1300	2.51	8.23
1400	2.62	8.60
1625	2.72	8.92
1600	2.92	9.58
1700	2.92	9.58
1794	3.01	9.88
1800	3.02	9.91
2000	3.20	10.50
2200	3.38	11.09
2400	3.56	11.68
2600	3.72	12.20
2800	3.89	12.76
3000	4.05	13.29

**Structural Return Loss**

MHz		dB
	5-1002	-30

Customers are reminded that they are SOLELY responsible for confirming that all products are properly installed and used in accordance with all applicable codes and regulations.

Document: tx10565ms 109\_3.0ghz19.docx  
Revision: 2019-09-09  
Page: 2 of 2

**Amphenol Broadband Solutions.**  
358 Hall Avenue  
Wallingford, CT 06492  
Toll Free +1-800-677-2288  
Toll +1-434-432-1800  
Fax +1-434-432-1821  
www.timesfiber.com

**uncontrolled copy**

All Rights Reserved,  
Specifications subject to change without notice