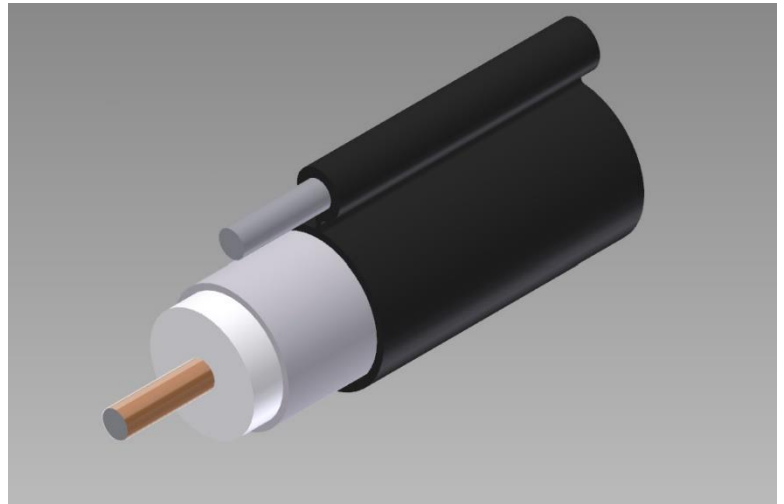


750 Series Coaxial Cable
Copper Clad Aluminum Conductor
Foamed Polyethylene Dielectric
Seamless Aluminum Tube Outer Conductor
Medium Density Polyethylene Jacket
0.188" Galvanized Steel Messenger



Cable Ordering Information

| Part Number | Description | NEC / CSA Listing |
|----------------------|---------------------|-------------------|
| 750750MS00BK11000001 | T10750MS / 188 MESS | n/a |

Characteristics

| Material | Detail | inches | mm |
|-----------------|------------------------------|--------|------|
| Inner Conductor | Copper Clad Aluminum | 0.166 | 4.22 |
| Dielectric | Foamed Polyethylene | 0.678 | 17.2 |
| Outer Conductor | Seamless Aluminum Tube | 0.750 | 19.1 |
| Floodant | --- | --- | --- |
| Jacket | Polyethylene, Outdoor, Black | 0.820 | 20.8 |
| Messenger | Galvanized Steel | 0.188 | 4.78 |
| Cable Width | --- | 1.215 | 30.9 |

Mechanical Specifications

| | | | |
|---------------------------------|-------------|-----|--------|
| Minimum Bend Radius, in. (mm) | | 7.0 | (178) |
| Product Weight, lbs/kft (kg/km) | (less reel) | 325 | (484) |

Customers are reminded that they are SOLELY responsible for confirming that all products are properly installed and used in accordance with all applicable codes and regulations.

Document: t10750ms-188 mess_1.8ghz17
Revision: 6.22.2017
Page: 1 of 2

Amphenol Broadband Solutions
358 Hall Avenue
Wallingford, CT 06492
Toll Free +1-800-677-2288
Toll +1-434-432-1800
Fax +1-434-432-1821
www.timesfiber.com

uncontrolled copy

All Rights Reserved,
Specifications subject to change without notice

| Electrical Specifications | | |
|---------------------------------|----------------|---------------|
| Impedance, Ω | 75 \pm 2 | |
| Velocity of Propagation, % | 87 | |
| Capacitance, Nominal | 15.3 pF/ft | 50.2 pF/m |
| DC Resistance | Ω / kft | Ω / km |
| Inner Conductor | 0.58 | 1.90 |
| Outer Conductor | 0.17 | 0.56 |
| Loop | 0.75 | 2.46 |
| Structural Return Loss, minimum | dB | |
| 5-1002 MHz | 30 | |

| Attenuation, Maximum @ 68 °F (20 °C) | | |
|--------------------------------------|-------------|------------|
| Frequency, MHz | dB / 100 ft | dB / 100 m |
| 5 | 0.11 | 0.36 |
| 55 | 0.37 | 1.21 |
| 211 | 0.73 | 2.41 |
| 250 | 0.81 | 2.65 |
| 270 | 0.84 | 2.76 |
| 300 | 0.89 | 2.92 |
| 330 | 0.94 | 3.08 |
| 350 | 0.97 | 3.18 |
| 400 | 1.05 | 3.44 |
| 450 | 1.12 | 3.67 |
| 500 | 1.18 | 3.87 |
| 550 | 1.25 | 4.10 |
| 600 | 1.31 | 4.30 |
| 750 | 1.48 | 4.86 |
| 870 | 1.61 | 5.28 |
| 1000 | 1.74 | 5.71 |
| 1100 | 1.84 | 6.33 |
| 1200 | 1.93 | 6.33 |
| 1218 | 1.94 | 6.36 |
| 1300 | 2.01 | 6.59 |
| 1400 | 2.10 | 6.89 |
| 1500 | 2.18 | 7.15 |
| 1600 | 2.26 | 7.41 |
| 1700 | 2.34 | 7.68 |
| 1794 | 2.42 | 7.94 |
| 1800 | 2.43 | 7.97 |

Customers are reminded that they are SOLELY responsible for confirming that all products are properly installed and used in accordance with all applicable codes and regulations.

Document: t10750ms-188 mess_1.8ghz17
Revision: 6.22.2017
Page: 2 of 2

uncontrolled copy

All Rights Reserved,
Specifications subject to change without notice

Amphenol Broadband Solutions
358 Hall Avenue
Wallingford, CT 06492
Toll Free +1-800-677-2288
Toll +1-434-432-1800
Fax +1-434-432-1821
www.timesfiber.com