

Limitless adaptability, fully scalable and complete flexibility

The C2X™ chassis is a streamlined bulkhead solution capable of deploying the Advanced Optical Modules (AOMs). Available in multiple configurations to use as patch, patch/splice, pre-terminated or modularly deployed in any mix of the C2 AOMs. The C2X chassis can provide up to 432 LC connections in a 4RU panel.



Fig. 1: C2X 3RU chassis

Answering today's connectivity needs

The C2X is a robust interconnect or cross-connect solution for any part of the network. This panel is adaptable to support the user with the answer to any network questions or demands.

C2X cable management features support and organize fiber as it exits the chassis. The design promotes proper bend radius for fiber up to 3.0 mm, as well as any boot type.

Key Benefits

Adaptable to use in any application

- Mountable in 19" or 23" racks or cabinets
- Capable of deploying all LC or all MPO, up to 3.0 fiber and long boot adapters
- Fully removable front fiber management bezel

Scalable for migration to 40G, 100G and beyond

- Grow as you go: chassis available separately from modules
- Available in 1RU, 2RU, 3RU and 4RU chassis options
- External or Internal Cable Clamping

Flexibility

- Diverse modular offering via the C2X AOM product line
- Capable of deploying base 8 or base 12 connectivity
- Configured as Bulkhead Patch, Bulkhead Patch and Splice, Pre-Terminated, or Tray/Module based



Fig. 2: C2X open 3RU patch chassis

Applications

C2X™ is the most adaptable chassis available that can fit into any application. This chassis is offered in a configuration with or without the front cable management door. There is also an option when space is limited or when fiber protection is already provided by a cabinet or enclosure to completely remove the front bezel.

- Central office
- Data center
- Edge networks
- Metro networks
- Cell sites
- Access networks

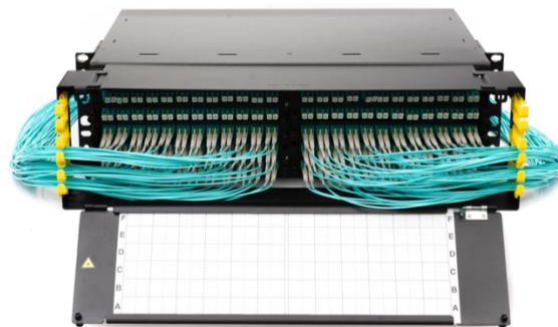


Fig. 3: C2X 1RU chassis

C2X Advanced Optical Modules

The C2X chassis is designed to deploy the C2 AOMs in any mix and configuration. Modules are interchangeable with the higher density C2LINX panel in any of the following options:

- Patch and splice
- Pre-terminated
- MPO
- TAPs
- Splitters
- WDMs



Fig. 4: Dual AOMs

Chassis Dimensions

Chassis	Dimensions
2RU	3.5" H x 18.98" W x 13.75" D; depth is 18.50" when front fiber management bezel is added
3RU	5.23" H x 18.98" W x 13.75" D; depth is 18.50" when front fiber management bezel is added
4RU	7" H x 18.98" W x 13.75" D; depth is 18.50" when front fiber management bezel is added

Chassis Density

Chassis	LC Connectors	SC Connectors	Dual Modules	Trays
2RU	192 LC connectors	96 SC connectors	8 dual AOMs	8 trays
3RU	288 LC connectors	144 SC connectors	12 dual AOMs	12 trays
4RU	432 LC connectors	216 SC connectors	16 dual AOMs	16 trays