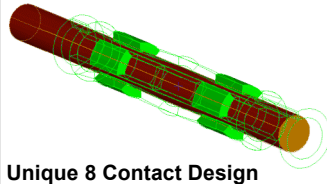

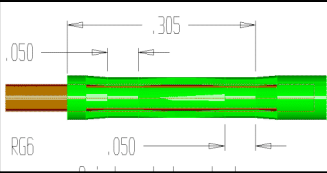


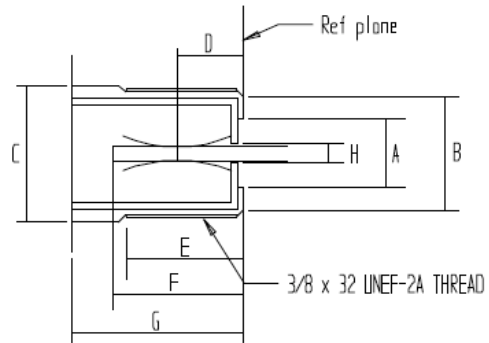
**Feed-Thru Connector Model F81CPBC - F81CP1NW**

<p><b>F Connector Features</b></p> <ul style="list-style-type: none"> <li>➤ Machined Brass Housing</li> <li>➤ Bright Tin Plating</li> <li>➤ Premium Circumference™ Contact</li> <li>➤ 8 Independent Contact Areas</li> <li>➤ Beryllium Copper Contact Material</li> <li>➤ RF Performance Beyond 1GHz Bandwidth</li> <li>➤ Conforms to SCTE Dimensional Standards</li> <li>➤ Available with Nut and Washer</li> </ul>	 <p>Unique 8 Contact Design</p>	 <p>Premium Circumference™ Contact</p>
		

**ANSI/SCTE DIMENSIONAL STANDARD**

**F-Port Physical Dimension Verification  
Female Outdoor Connector  
Complies With ANSI/SCTE 01 1996R2001**

DESCRIPTION	DIM	MIN	MAX
FACE OPENING INNER DIA	A	0.170	0.240
FACE OUTER DIA	B	0.280	0.315
BASE OUTER DIA	C	0.370	0.435
POSITIVE CONTACT LENGTH FROM FACE	D	-	0.200
PORT THREADED LENGTH	E	0.325	0.350
CENTER CONTACT DEPTH	F	0.380	-
SEALING SURFACE TO FACE LENGTH	G	0.475	0.520
CENTER CONDUCTOR GUIDE INNER DIA	H	-	0.068



**F81 BARREL SPLICE CONNECTOR**

**Mechanical Specifications**

F81CPBC - F81CP1NW		
SPECIFICATION	DIM	TYPICAL
FACE OPENING INNER DIA	A	0.195
FACE OUTER DIA	B	0.315
BASE OUTER DIA	C	0.370
POSITIVE CONTACT LENGTH FROM FACE	D	0.120
PORT THREADED LENGTH	E	0.350
CENTER CONTACT DEPTH	F	0.550
SEALING SURFACE TO FACE LENGTH	G	0.500
CENTER CONDUCTOR GUIDE INNER DIA	H	0.045

Unique Contact Design Distributed Current Density To Increases Reliability.

**RF Specifications**

Model F81CPBC - F81CP1NW		
PARAMETER	FREQ MHz	SPEC
<b>Insertion Loss (dB Max)</b>		
	5-500	0.10
	501-600	0.15
	601-1000	0.20
<b>Return Loss (dB Min)</b>		
	5-500	27
	501-600	26
	601-1000	25
<b>RFI (dB Min)</b>		
	5-1000	100

Specifications Compliant Throughout Operating Temperature Of -40°C to +60°C  
Specifications Are Subject To Change Without Notice  
© 2005 Extreme Broadband Engineering LLC. All rights reserved